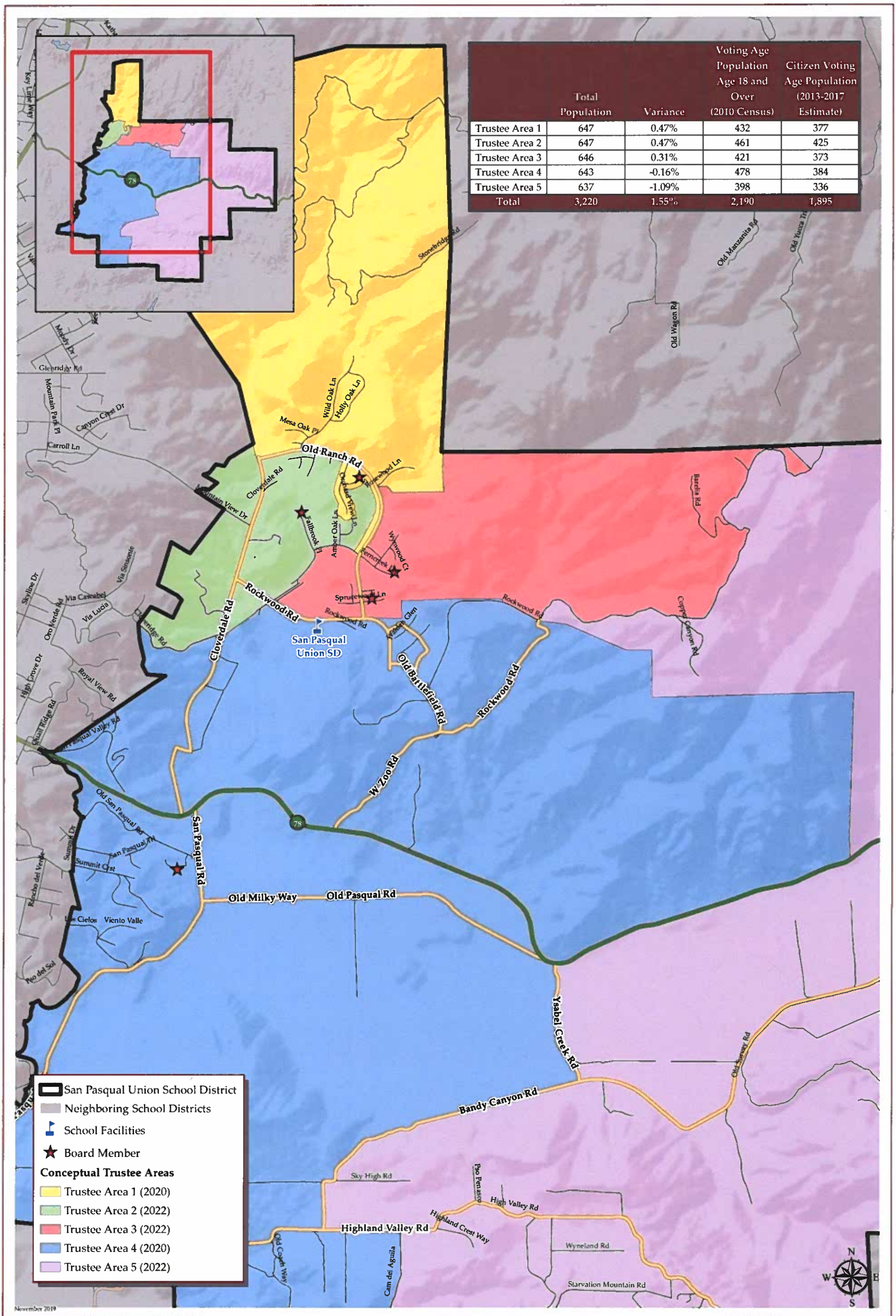


SAN PASQUAL UNION SCHOOL DISTRICT CONCEPTUAL TRUSTEE AREAS - SCENARIO 1



San Pasqual Union School District
 Neighboring School Districts
♣ School Facilities
★ Board Member
Conceptual Trustee Areas
 Trustee Area 1 (2020)
 Trustee Area 2 (2022)
 Trustee Area 3 (2022)
 Trustee Area 4 (2020)
 Trustee Area 5 (2022)

SAN PASQUAL UNION SCHOOL DISTRICT
CONCEPTUAL TRUSTEE AREAS - SCENARIO 1

Total Population (2010 Census)						
	Trustee Area 1	Trustee Area 2	Trustee Area 3	Trustee Area 4	Trustee Area 5	Variance
Population	647	647	646	643	637	
Population Variance	3	3	2	-1	-7	
	0.47%	0.47%	0.31%	-0.16%	-1.09%	1.55%
Hispanic/Latino	52	81	80	166	241	
	8.04%	12.52%	12.38%	25.82%	37.83%	
White	540	517	497	436	320	
	83.46%	79.91%	76.93%	67.81%	50.24%	
Black/	4	2	6	2	49	
African American	0.62%	0.31%	0.93%	0.31%	7.69%	
American Indian/	2	1	2	1	2	
Alaska Native	0.31%	0.15%	0.31%	0.16%	0.31%	
Asian	32	26	33	36	9	
	4.95%	4.02%	5.11%	5.60%	1.41%	
Native Hawaiian/	0	1	1	0	4	
Other Pacific Islander	0.00%	0.15%	0.15%	0.00%	0.63%	
Other	4	0	3	0	3	
	0.62%	0.00%	0.46%	0.00%	0.47%	
Two or More Races	14	19	23	2	9	
	2.16%	2.94%	3.56%	0.31%	1.41%	

Population 18 and Over (2010 Census)					
	Trustee Area 1	Trustee Area 2	Trustee Area 3	Trustee Area 4	Trustee Area 5
Population	432	461	421	478	398
Population Variance	-6	23	-17	40	-40
	-1.37%	5.25%	-3.88%	9.13%	-9.13%
Hispanic/Latino	32	47	46	108	123
	7.41%	10.20%	10.93%	22.59%	30.90%
White	367	381	332	337	243
	84.95%	82.65%	78.86%	70.50%	61.06%
Black/	2	2	2	1	16
African American	0.46%	0.43%	0.48%	0.21%	4.02%
American Indian/	1	1	1	1	1
Alaska Native	0.23%	0.22%	0.24%	0.21%	0.25%
Asian	21	21	23	29	3
	4.86%	4.56%	5.46%	6.07%	0.75%
Native Hawaiian/	0	1	1	0	3
Other Pacific Islander	0.00%	0.22%	0.24%	0.00%	0.75%
Other	3	0	3	0	3
	0.69%	0.00%	0.71%	0.00%	0.75%
Two or More Races	6	8	13	2	6
	1.39%	1.74%	3.09%	0.42%	1.51%

Citizens by Voting Age Population Estimate (2013-2017)					
	Trustee Area 1	Trustee Area 2	Trustee Area 3	Trustee Area 4	Trustee Area 5
Population	377	425	373	384	336
Population Variance	-2	46	-6	5	-43
	-0.53%	12.14%	-1.58%	1.32%	-11.35%
Hispanic/Latino	31	51	45	72	93
	8.22%	12.00%	12.06%	18.75%	27.68%
White	305	322	275	274	213
	80.90%	75.76%	73.73%	71.35%	63.39%
Black/	1	1	1	0	12
African American	0.27%	0.24%	0.27%	0.00%	3.57%
American Indian/	0	0	0	0	0
Alaska Native	0.00%	0.00%	0.00%	0.00%	0.00%
Asian	29	30	34	36	3
	7.69%	7.06%	9.12%	9.38%	0.89%
Native Hawaiian/	0	0	0	0	0
Other Pacific Islander	0.00%	0.00%	0.00%	0.00%	0.00%
Other	0	0	0	0	0
	0.00%	0.00%	0.00%	0.00%	0.00%
Two or More Races	10	21	17	2	15
	2.65%	4.94%	4.56%	0.52%	4.46%