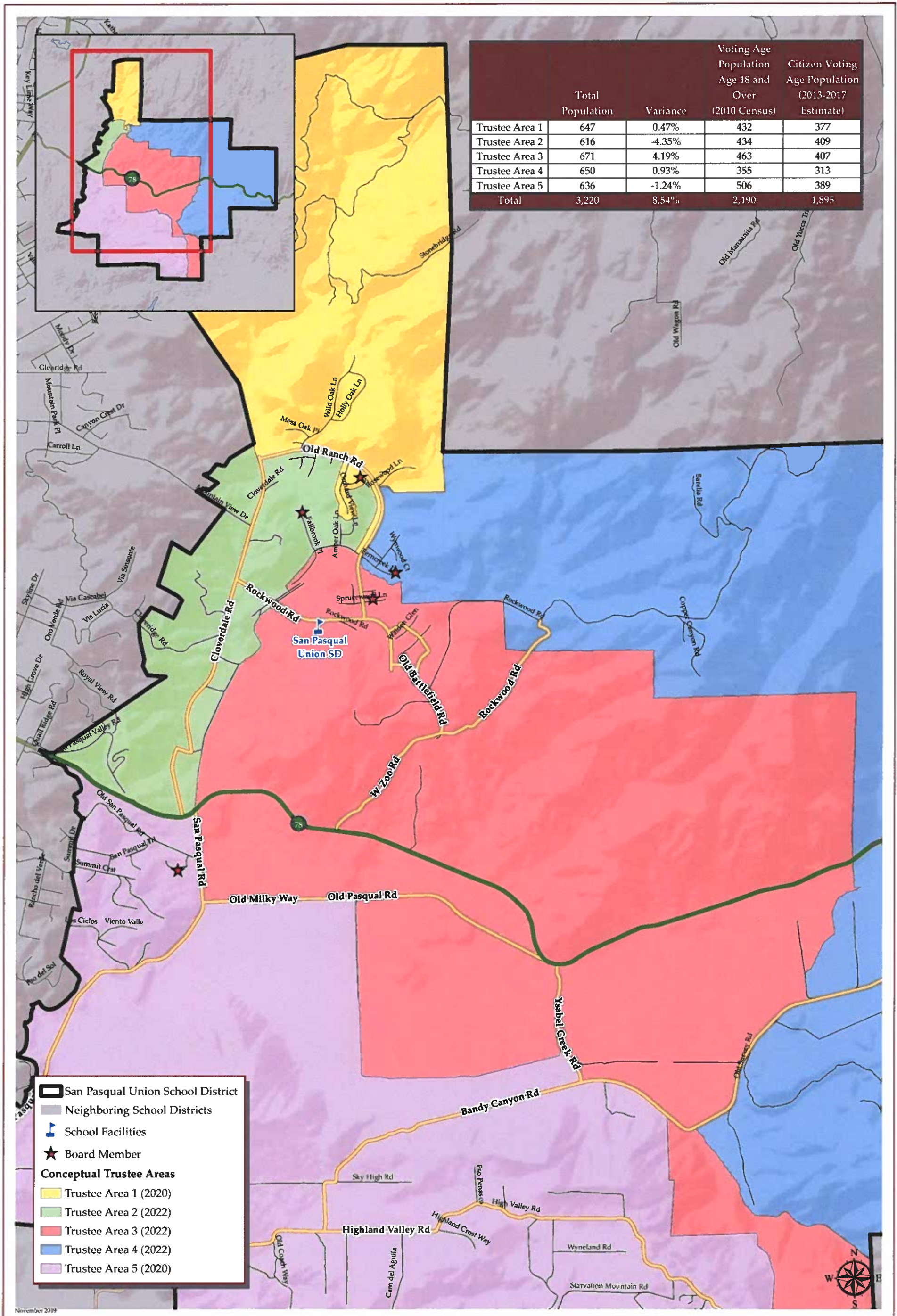


SAN PASQUAL UNION SCHOOL DISTRICT CONCEPTUAL TRUSTEE AREAS - SCENARIO 2



SAN PASQUAL UNION SCHOOL DISTRICT
CONCEPTUAL TRUSTEE AREAS - SCENARIO 2

Total Population (2010 Census)						
	Trustee Area 1	Trustee Area 2	Trustee Area 3	Trustee Area 4	Trustee Area 5	Variance
Population	647	616	671	650	636	
Population Variance	3	-28	27	6	-8	
	0.47%	-4.35%	4.19%	0.93%	-1.24%	8.54%
Hispanic/Latino	52	83	136	196	153	
	8.04%	13.47%	20.27%	30.15%	24.06%	
White	540	484	459	360	467	
	83.46%	78.57%	68.41%	55.38%	73.43%	
Black/	4	2	6	50	1	
African American	0.62%	0.32%	0.89%	7.69%	0.16%	
American Indian/	2	1	2	2	1	
Alaska Native	0.31%	0.16%	0.30%	0.31%	0.16%	
Asian	32	26	44	26	8	
	4.95%	4.22%	6.56%	4.00%	1.26%	
Native Hawaiian/	0	1	2	0	3	
Other Pacific Islander	0.00%	0.16%	0.30%	0.00%	0.47%	
Other	4	0	4	2	0	
	0.62%	0.00%	0.60%	0.31%	0.00%	
Two or More Races	14	19	18	13	3	
	2.16%	3.08%	2.68%	2.00%	0.47%	

Population 18 and Over (2010 Census)					
	Trustee Area 1	Trustee Area 2	Trustee Area 3	Trustee Area 4	Trustee Area 5
Population	432	434	463	355	506
Population Variance	-6	-4	25	-83	68
	-1.37%	-0.91%	5.71%	-18.95%	15.53%
Hispanic/Latino	32	48	89	89	98
	7.41%	11.06%	19.22%	25.07%	19.37%
White	367	353	320	227	393
	84.95%	81.34%	69.11%	63.94%	77.67%
Black/	2	2	2	16	1
African American	0.46%	0.46%	0.43%	4.51%	0.20%
American Indian/	1	1	1	1	1
Alaska Native	0.23%	0.23%	0.22%	0.28%	0.20%
Asian	21	21	34	13	8
	4.86%	4.84%	7.34%	3.66%	1.58%
Native Hawaiian/	0	1	2	0	2
Other Pacific Islander	0.00%	0.23%	0.43%	0.00%	0.40%
Other	3	0	4	2	0
	0.69%	0.00%	0.86%	0.56%	0.00%
Two or More Races	6	8	10	8	3
	1.39%	1.84%	2.16%	2.25%	0.59%

Citizens by Voting Age Population Estimate (2013-2017)					
	Trustee Area 1	Trustee Area 2	Trustee Area 3	Trustee Area 4	Trustee Area 5
Population	377	409	407	313	389
Population Variance	-2	30	28	-66	10
	-0.53%	7.92%	7.39%	-17.41%	2.64%
Hispanic/Latino	31	56	68	73	64
	8.22%	13.69%	16.71%	23.32%	16.45%
White	305	301	270	195	318
	80.90%	73.59%	66.34%	62.30%	81.75%
Black/	1	1	1	12	0
African American	0.27%	0.24%	0.25%	3.83%	0.00%
American Indian/	0	0	0	0	0
Alaska Native	0.00%	0.00%	0.00%	0.00%	0.00%
Asian	29	30	50	18	5
	7.69%	7.33%	12.29%	5.75%	1.29%
Native Hawaiian/	0	0	0	0	0
Other Pacific Islander	0.00%	0.00%	0.00%	0.00%	0.00%
Other	0	0	0	0	0
	0.00%	0.00%	0.00%	0.00%	0.00%
Two or More Races	10	21	18	14	2
	2.65%	5.13%	4.42%	4.47%	0.51%